

SunSine® 200 AC Module

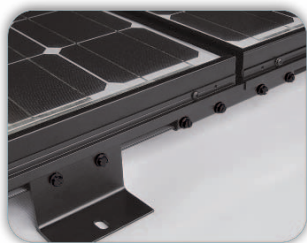
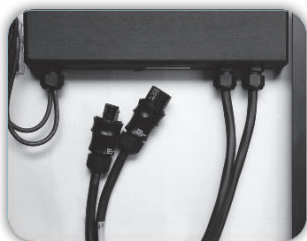
The Ultimate All-in-One Solar Solution

SIMPLER, MORE RELIABLE SOLAR.

GreenRay's modular, plug-and-play SunSine® AC Module makes solar more affordable by radically simplifying solar system design and installation.

Simply plug our AC modules together with quick-connect cables and drop into a specially designed roof mount. With fewer components, and faster mounting and wiring, installation has never been easier or safer.

Our all-in-one SunSine® AC Module integrates all the major system components – solar module, micro-inverter, mounting, and monitoring – into a single package, while maximizing energy production and system reliability. So, whether you're considering solar for a home or business, there is no simpler, more reliable system than GreenRay.



SIMPLER.

With all of the components integrated at the factory, system design is virtually eliminated. Plus, there are no inverters to mount, no DC wiring, and no cumbersome racks or rails to handle. With 40% fewer components, simpler mounting, and easier wiring, installation time is cut in half!

MORE RELIABLE.

GreenRay's SunSine AC Module is unique in its high reliability and has 3X the life expectancy of today's inverters through the elimination of weak components. Each module is also individually monitored and performance is easily accessible via any web-enabled device.

MORE POWERFUL.

The SunSine AC Module produces 5% to 25% more energy than typical PV systems, where one underperforming panel decreases the efficiency of the entire system. Each SunSine® AC Module operates independently. As a result, energy losses from soiling, shading, and module mismatches are minimized, while energy production is optimized.

GENERAL

Maximum Number per 20A Circuit	10 (120V circuit); 20 (120/240V circuit); 20 (120/208V circuit)
Warranty	Inverter: 20 yrs Module: 5 yrs - workmanship, 20 yrs – power
Ambient Temp. ¹	-4°F to 115°F (-20°C to 46°C)
Utility Connect	5 min turn-on delay
Hail Safety Impact Velocity	1" (25mm) @ 52 mph (23 m/s)
NOCT	114.8° F (46°C)
Communication	Powerline

ELECTRICAL SPECIFICATIONS

Maximum AC Power [Module Rated DC Power, STC ³]	200 W ±5% [210 W]
Nominal AC Voltage	120 V
Operating Utility AC Voltage Range ²	107 – 131 V
Maximum AC Output Current	1.6 A
Nominal AC Frequency	60 Hz
Operating Utility Frequency Range ²	59.4 – 60.4 Hz
Total Harmonic Distortion (THD)	< 5% max
Power Factor (100% Power)	0.98
Efficiency: Sunlight to AC Power, STC ³	15.3%

¹ Monthly average low and high temperatures at the installation site

² Adjustable

³ Standard Test Conditions: Cell temp. 25°C, AM1.5, 1000W/m²

MOUNTING AND WIRING

Residential Mounting: GreenRay Quick Mount – eliminates traditional racking hardware

Gap Between Adjacent Modules: 0.5"

Gap Between Adjacent Rows: 2.25"

Ground Wiring: UL approved, equipment ground carried by module frames and mounting - No ground wires required

Module – to –Module AC Wiring: 3-position, fully-guarded, locking AC-connector

Automatic balancing of power across phases of 120/240V and 120/208V electrical service

MECHANICAL SPECIFICATIONS

Dimensions [in(mm)]	62.7 x 31.4 x 1.8 (1590 x 798 x 46)
Weight [lbs(kg)]	44.0 (20.0)
Static Load Wind / Snow	60PSF / 39 PSF
Fire Safety Classification	Class C
Cells	72 series, 5-inch high efficiency cells
Module Area	13.67 ft ² (1.27 m ²)

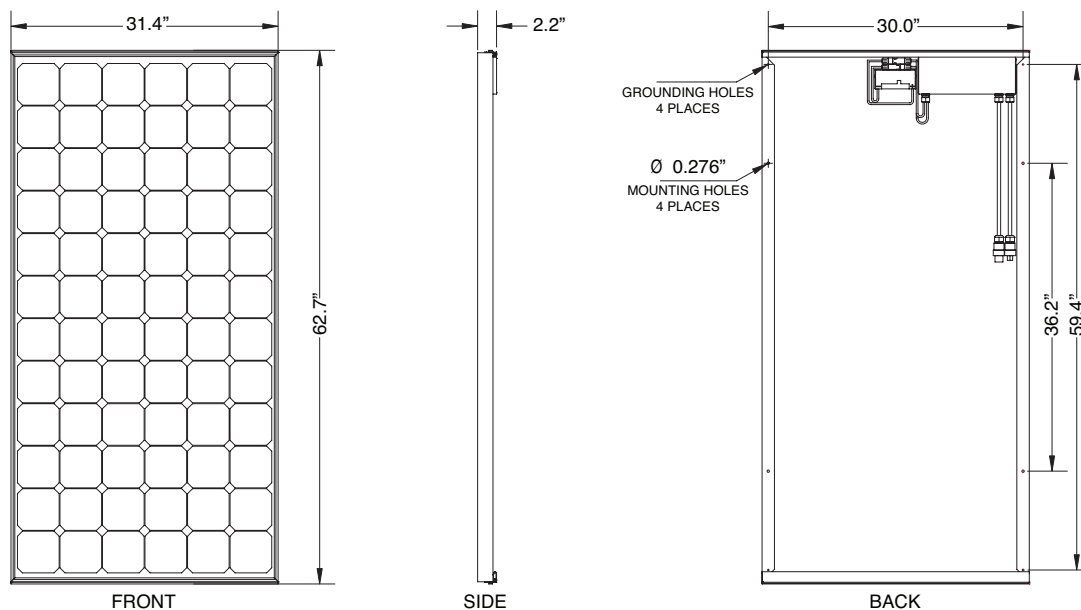
CERTIFICATIONS

PV Module: UL 1703, cUL, CEC

Micro-Inverter: UL 1741

SunSine AC Module (PV Module and Integrated Micro-Inverter): UL 1741, IEEE 1547, FCC Part 15 Class B

US Patents Pending



GreenRay, Inc.
2 Park Drive, Suite 1, Westford, MA 01886
978.631.0509 | info@greenraysolar.com
www.greenraysolar.com